



CASE STUDY

Chiswick Gate, London W4

Berkeley Homes beautiful development of townhouses and luxury apartments required the installation of wetrooms onto screeded floors.

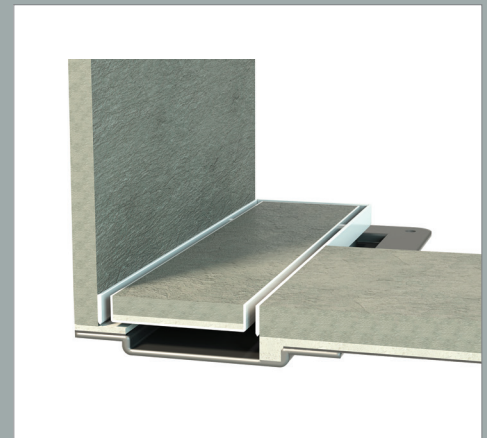
THE CHALLENGE

Chiswick Gate is a stunning collection of one and two bedroom apartments and three, four and five bedroom townhouses from Berkeley Homes, inspired by the timeless quality of London's residential squares.

The development features a beautifully landscaped, pedestrianised boulevard and lush garden square that forms the heart of the community and offers

residents a tranquil green space, difficult to find so close to the capital.

As a nominated installer to Berkeley Homes, Wetrooms UK were approached by Stone & Ceramic to supply and install 188 wetrooms into the luxury development, that would be suitable for installation onto the screeded floors.



THE SOLUTION

Wetrooms UK recommended the installation of a Linear Screed Drain and a Stone-Infill Grill (of varying sizes up to 2m in length) into the master bathroom and family shower room in each of the townhouses and apartments.

RIW Tilesafe waterproof membrane was applied to the floor and wall junctions within each of the shower areas and 1m outside of the shower area, finishing 75mm up the wall/floor junction.

Finally, RIW FWM was applied full height to the walls within the shower area, linking to the RIW Tilesafe Membrane.



CLIENT TESTIMONIAL:

“Stone & Ceramic project managed the twelve month construction projection at Chiswick Gate, which required waterproofing and drainage solutions from Wetrooms UK into the 188 wetrooms. As natural stone specialists, Stone & Ceramic's beautiful stone finishes completed the high end look. The project was successfully completed for Berkeleys on time and included 10 year installation guarantees from Wetrooms UK.”

Sanj Johal, Senior Commercial Manager
Stone & Ceramic

PRODUCTS SPECIFIED

Linear Screed Drains

Stone-Infill Grills from 1 to 2m

RIW Tilesafe Kits

RIW FWM