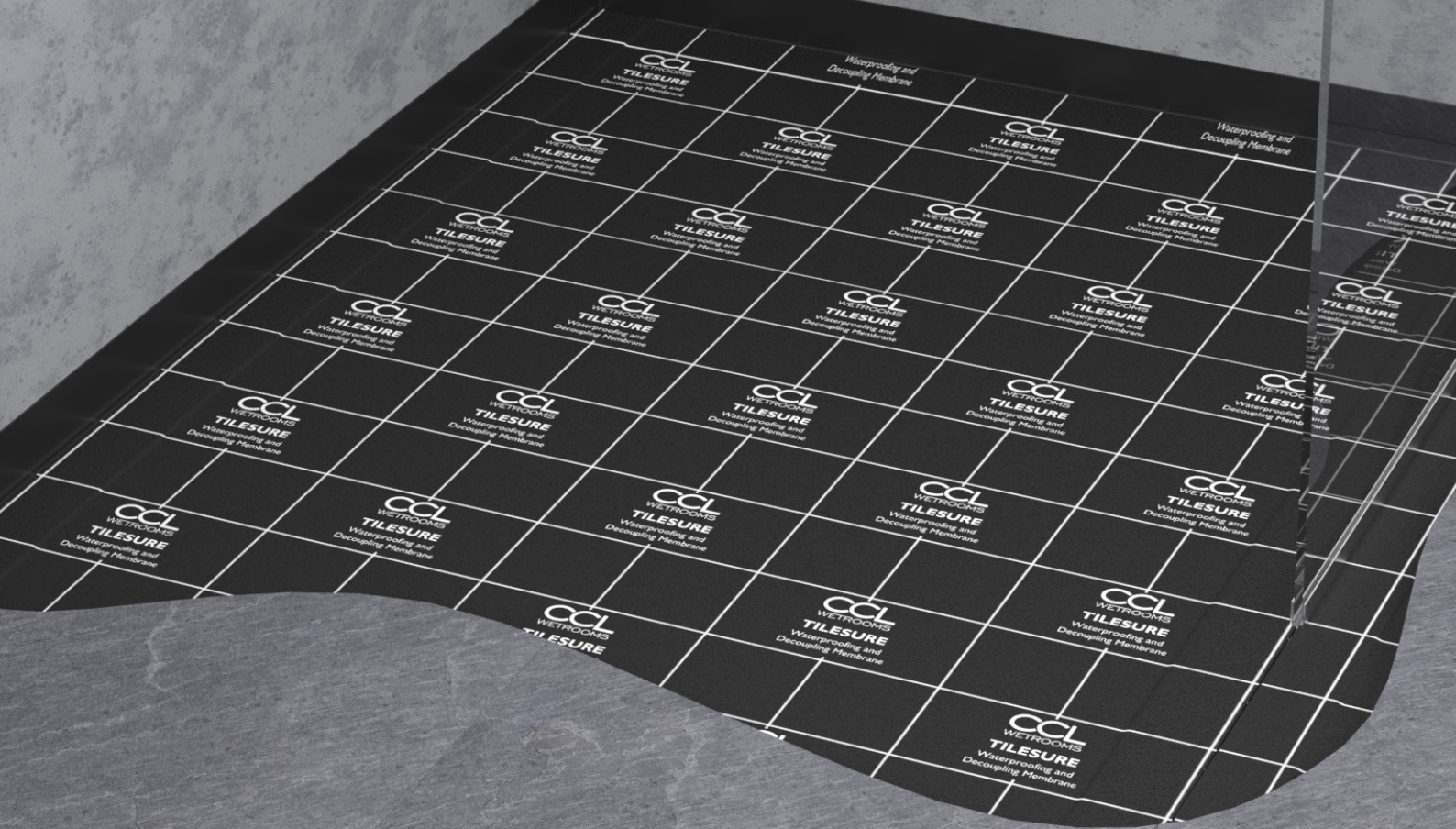


Tilesure

Waterproofing & Decoupling Membrane



PRODUCT
SPECIFICATION
GUIDE





SECTION 3 . WATERPROOFING

3.1	TILESURE	WATERPROOFING & DECOUPLING (FLOOR)
3.2	SCREEDSURE	WATERPROOFING (FLOOR)
3.3	FWM	WATERPROOFING (WALL)

PRODUCT
SPECIFICATION
GUIDE

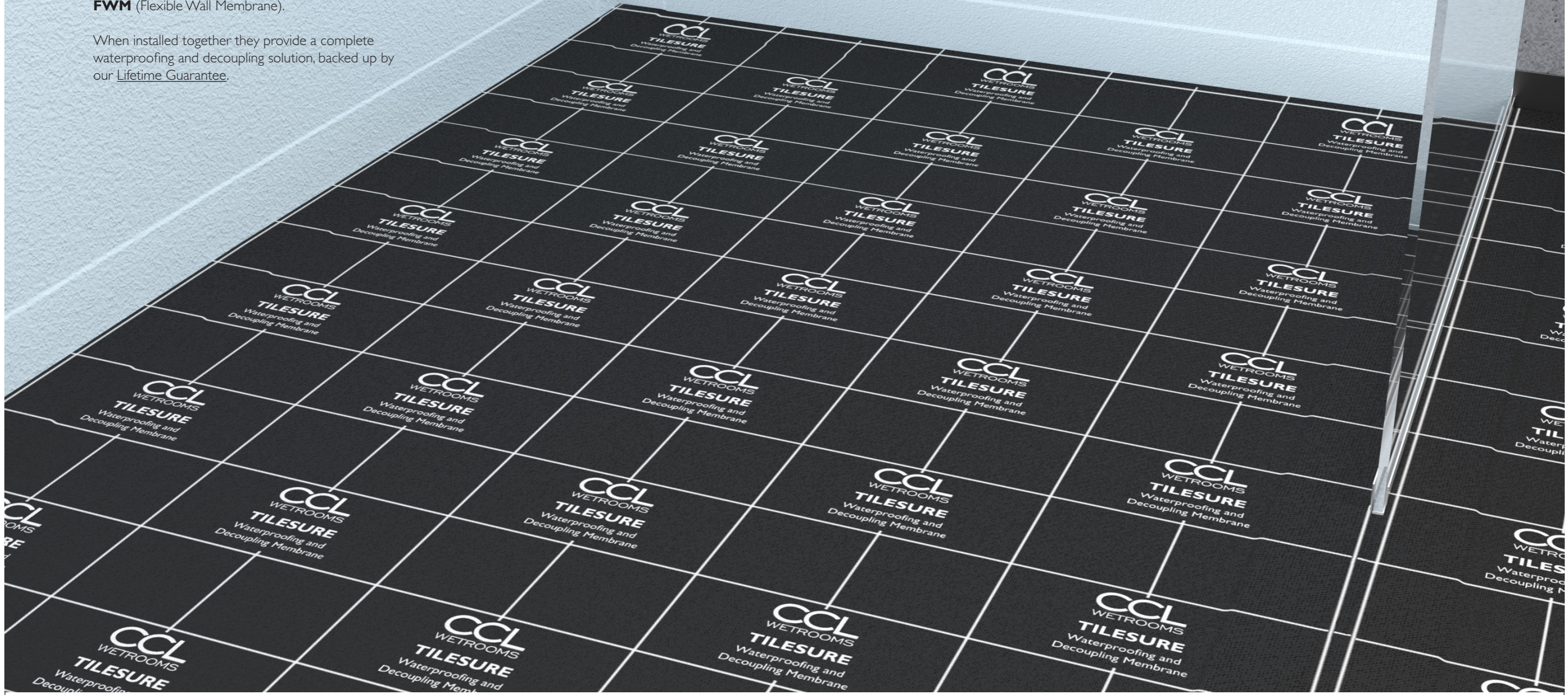
Waterproofing

One of the primary concerns when creating a wetroom is how to ensure it remains waterproof, even when installed onto timber floors and other porous substrates.

Through our continued research and development we have created a unique waterproofing system that is guaranteed, not just for a few years, but for a lifetime.

The two components of this system are the floor membrane – **Tilesure** and the wall membrane - **FWM** (Flexible Wall Membrane).

When installed together they provide a complete waterproofing and decoupling solution, backed up by our Lifetime Guarantee.



INTRODUCTION



Tilesure is a heavy duty self-adhesive waterproofing and decoupling membrane designed for use onto timber and solid floors.

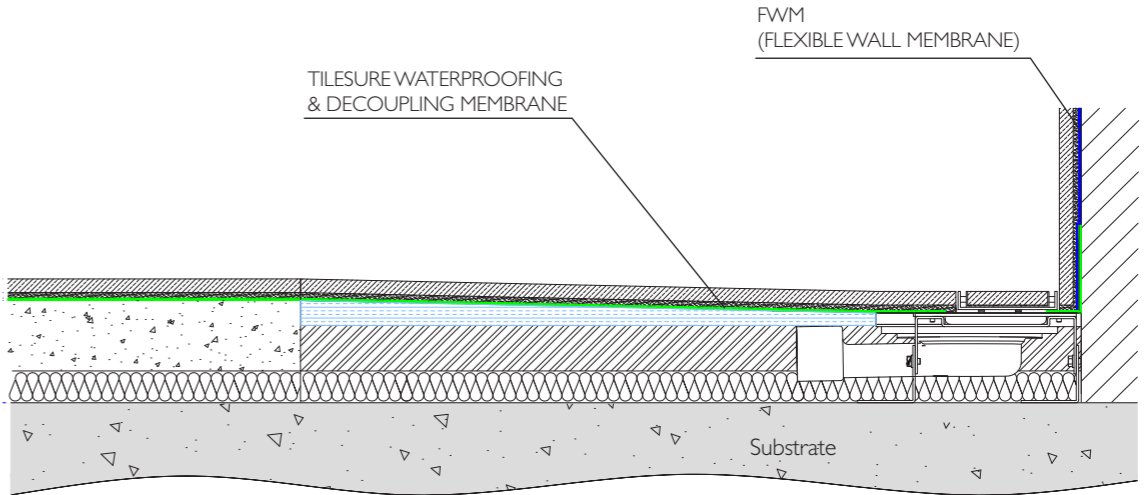
Developed specifically for use in bathrooms, wetrooms and similar wet areas, Tilesure is comprised of a 1.4mm butyl based membrane, with a copolymer top layer; which provides an excellent surface for the adhesion of natural stone, porcelain and ceramic tiles.

Tilesure is quick and easy to apply, providing a consistent waterproof layer, guaranteed not to leak. Tilesure also acts as a decoupling membrane by uncoupling the floor tiles and accommodating movement in the substrate, within a thickness of only 1.4mm. This omits the requirement for a traditional decoupling mat.

Tilesure also provides an effective barrier to the transition of water vapour.

KEY FEATURES

- Lifetime Guarantee
- Decoupling properties up to 12mm
- Self adhesive - quick and easy to apply
- Suitable for timber and solid floors including gypsum based anhydrite screeds
- Ready to tile immediately
- Suitable for use with electric and wet underfloor heating ^{‡1}
- 1.4mm Factory controlled thickness
- Compatible with silicone sealants & stone sealers



^{‡1} See page 7 for details

PRODUCT INFORMATION

DETAIL

Tilesure is a highly flexible waterproofing and decoupling membrane comprised of a unique copolymer top layer, with a self-adhesive butyl underside, giving an overall thickness of only 1.4mm.

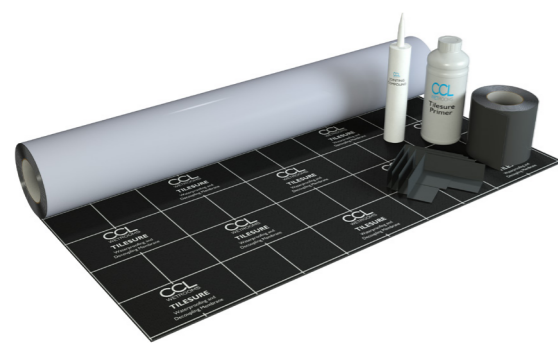
Tilesure is quick and easy to apply with a working temperature range of +5°C to +35°C. It has no drying time and is therefore ready to tile immediately.

5m² Kit Contents

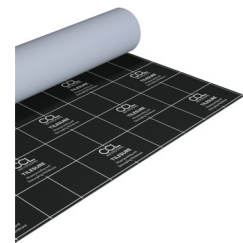
- 5m x 1m Roll of membrane
- 10m Reinforcing tape
- 500ml Primer
- 290ml Jointing Compound
- 4 x Pre-formed Internal Corners

10m² Kit Contents

- 10m x 1m Roll of membrane
- 15m Reinforcing Tape
- 1L Primer
- 290ml Jointing Compound
- 4 x Pre-formed Internal Corners



Membrane



A self-adhesive waterproofing and decoupling membrane with an easy peel release liner.

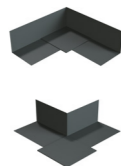
- Thickness 1.4mm
- Width 1m
- Length 5m & 10m

Primer



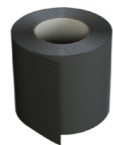
A quick drying acrylic primer for use prior to the application of Tilesure Membrane and Reinforcing Tape.

Internal / External Corners



Internal and External Pre-Formed Corners designed to save time and minimise the build-up of membrane in the corners.

Reinforcing Tape



A self-adhesive HDPE butyl Reinforcing Tape with an easy peel release liner, used for reinforcing all wall and floor junctions, butt joints, niches and other detail work within the membrane.

- Thickness 1mm
- Width 125mm
- Length 10m & 15m

Jointing Compound



An advanced polymer based Jointing Compound for use at all wall and floor junctions, butt joints, pipe entries and other such details.

PRODUCT INFORMATION

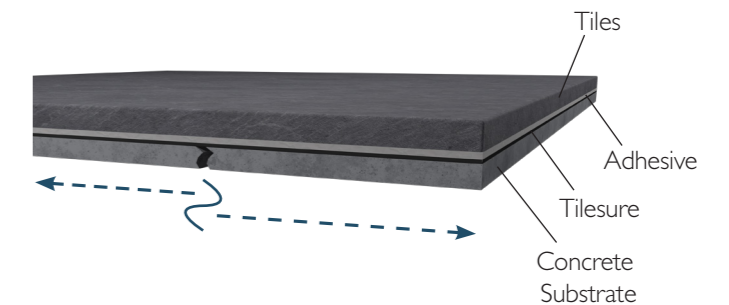
DECOUPLING

Tilesure also acts as a decoupling or anti-fracture layer, accommodating differential movement between the substrate and the tiles, making it ideal for use on modular and lively substrates, such as timber, masonry, screed, gypsum, calcium sulphate and tile backer boards.

Similarly, static, dynamic or stress cracks present in the substrate are bridged, therefore reflective cracking through the tile is prevented.

Tilesure will decouple up to 12mm

To achieve decoupling performance Tilesure should be applied to the entire bathroom floor area.



TILESURE PERFORMANCE & COMPOSITION

Membrane Thickness	1.4mm
Reinforcing Tape Thickness	1.0mm
Tensile Adhesion Strength	202.5N /50mm ²
Water Vapour Transmission	0%
Tensile Strength (EN 12311-2) - Longitudinal - Transversal	59N /mm ² 59N /mm ²
Anti-fracture & Decoupling (Tinius Olsen)	12mm
Elongation - Longitudinal - Transversal	≥ 22% ≥ 15%
Joint Strength (EN 12317-2)	21N /50mm
Tear Resistance (EN 12310-1) - Longitudinal - Transversal	90N 65N
Loop Tack	≥ 33N
Peel Adhesion 180°	≥ 11N /10mm

Compatible with electric underfloor heating up to 150kw per m²

Compatible with wet underfloor heating systems, provided the pipework does not come into direct contact with the membrane



Full technical data sheet available upon request from our technical department

PRODUCT CODES

ITEM	DESCRIPTION	CODE
	5m² Tilesure Kit Kit contains – 5m x 1m roll of membrane, 10m Reinforcing Tape, 500ml Primer, 290ml Jointing Compound	TSM-K5
	10m² Tilesure Kit Kit contains – 10m x 1m roll of membrane, 15m Reinforcing Tape, 1Ltr Primer, 290ml Jointing Compound	TSM-K10

ADDITIONAL ITEMS	DESCRIPTION	CODE	ADDITIONAL ITEMS	DESCRIPTION	CODE
	Additional 10m Reinforcing Tape	TSM-T10		Jointing Compound 290ml	TSM-JC2
	Primer 500ml	TSM-PR5		Pre-formed Internal Corner	PFC-INT
	Primer 1L	TSM-PR10		Pre-formed External Corner	PFC-EXT

Recommended for Waterproofing Walls ^{#1}

ITEM	DESCRIPTION	CODE
	Flexible Wall Membrane - 8kg tub	FWM-8
	Flexible Wall Membrane Tape - 10m	FWM-TAPE
	Flexible Wall Membrane Primer - 500ml	FWM-PR5

FWM (Flexible Wall Membrane) is a single coat, acrylic paste designed for waterproofing wall surfaces prior to the application of natural stone, porcelain and ceramic tiles. ^{#1}

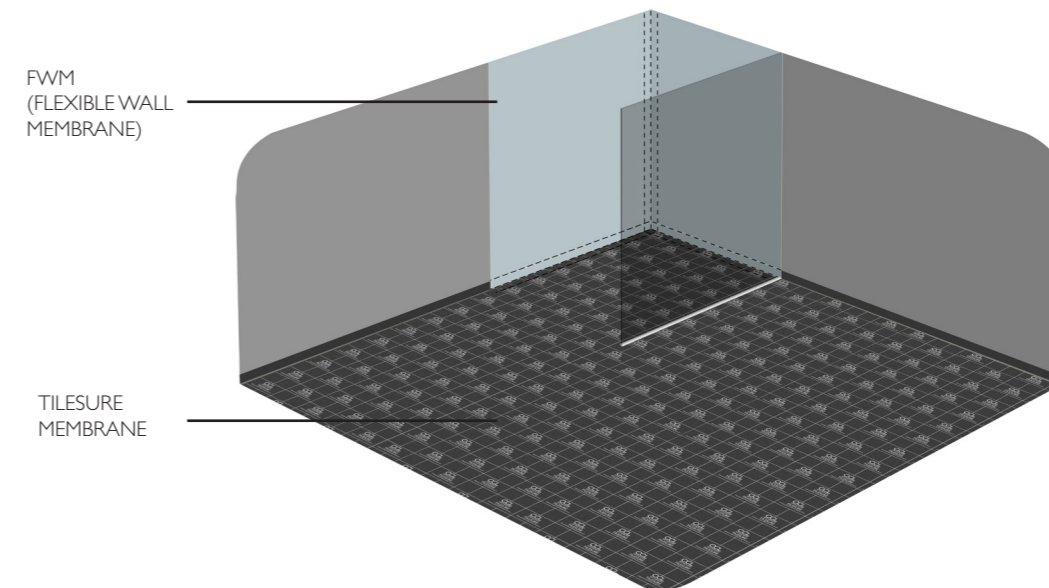
When combined with Tilesure, the system provides a complete waterproofing solution, backed up by our [Lifetime Guarantee](#).

^{#1} See Product Specification Guide section 3.3 for full details of FWM

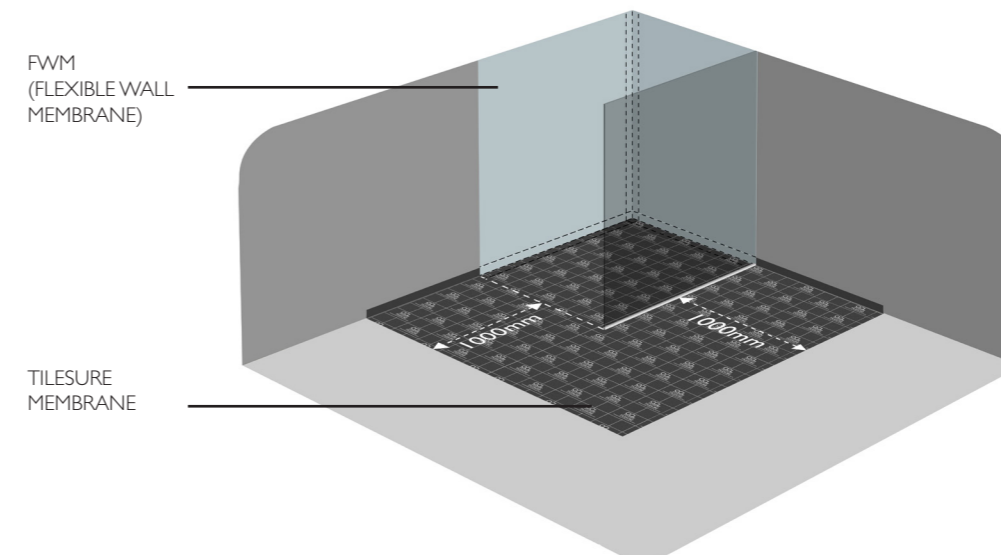
RECOMMENDED APPLICATION

For the majority of installations, it is recommended that Tilesure is applied to the entire bathroom floor area. FWM ^{#1} should be applied to the walls within the shower area only, to a minimum height of 2000mm and overlapping the Tilesure Reinforcing Tape.

Waterproofing to the entire bathroom floor area (recommended)



Waterproofing to the shower area + 1 metre (minimum requirement)



For larger bathrooms or where cost may be a consideration, Tilesure should be applied to a minimum of the shower area, plus an additional one metre in all directions. FWM ^{#1} should be applied to the walls within the shower area only, to a minimum height of 2000mm and overlapping the Tilesure Reinforcing Tape.

Please Note

Decoupling will only be effective when Tilesure is applied to the entire bathroom floor area.

^{#1} See Product Specification Guide section 3.3 for full details of FWM

TECHNICAL ENQUIRIES TEL: 0844 327 6002

technical@ccl-wetrooms.co.uk
www.ccl-wetrooms.co.uk

CCL Specialist Supplies Ltd
Lodge Farm
Hook Road
North Wamborough
Hook
RG29 1HA



TECHNICAL SUPPORT

For technical assistance please contact our experienced technical department who will be happy to assist in the following:

- Project design
- Product specification
- CAD drawings
- Method statements

TECHNICAL SEMINARS

We are able to provide CPD based seminars designed to provide guidance on key wetroom design considerations such as:

- Design and layout
- Drainage
- Waterproofing
- Flow rates

For further information please contact our technical department.

TECHNICAL ADVICE

Our team of technical advisors are able to visit you to provide a professional advisory service and assist with project design and specification.

We are also able to attend site to provide technical support and assistance.

INSTALLATION ENQUIRIES TEL: 0845 045 6001

enquiries@wetroomsuk.co.uk
www.wetroomsuk.co.uk

Wetrooms UK Ltd
Lodge Farm
Hook Road
North Wamborough
Hook
RG29 1HA

INSTALLATION

With over 30 years experience in the waterproofing industry, our involvement in a project from conception to completion ensures that quality is never compromised.

Our services include:

- Design and installation
- 10 Year Insured Installation guarantee
- On-site training



PEACE OF MIND
GUARANTEED

