



Screedsure

Waterproofing Membrane

PRODUCT
SPECIFICATION
GUIDE

CCL
WETROOMS



SECTION 3 - WATERPROOFING

3.1 TILESURE

3.1

3.2 SCREEDSURE

3.2

3.3 FWM

3.3

Waterproofing

When creating a wetroom onto a solid floor one of the primary concerns is to ensure it remains waterproof.

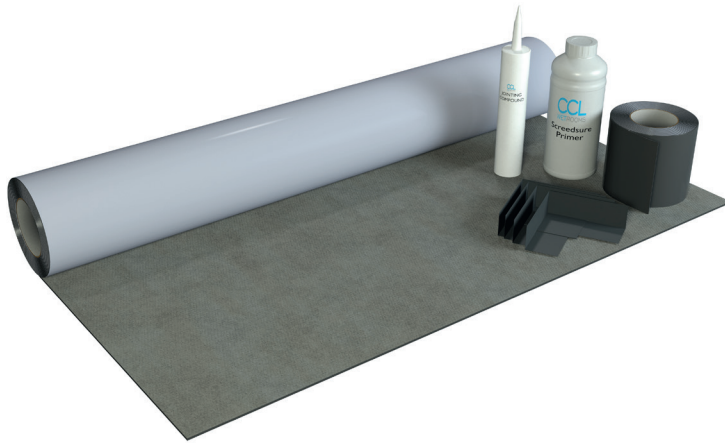
Through our continued research and development, we have created a unique waterproofing system that is guaranteed, not just for a few years, but for a lifetime.

The two components of this system are the floor membrane – **Screedsure** and the wall membrane – **FWM** (Flexible Wall Membrane).

When installed together, they provide a complete waterproofing solution backed up by our [Lifetime Guarantee](#).



INTRODUCTION



3.2

Screedsure is a copolymer self-adhesive waterproofing membrane specifically designed for use onto screeded and other solid floors.

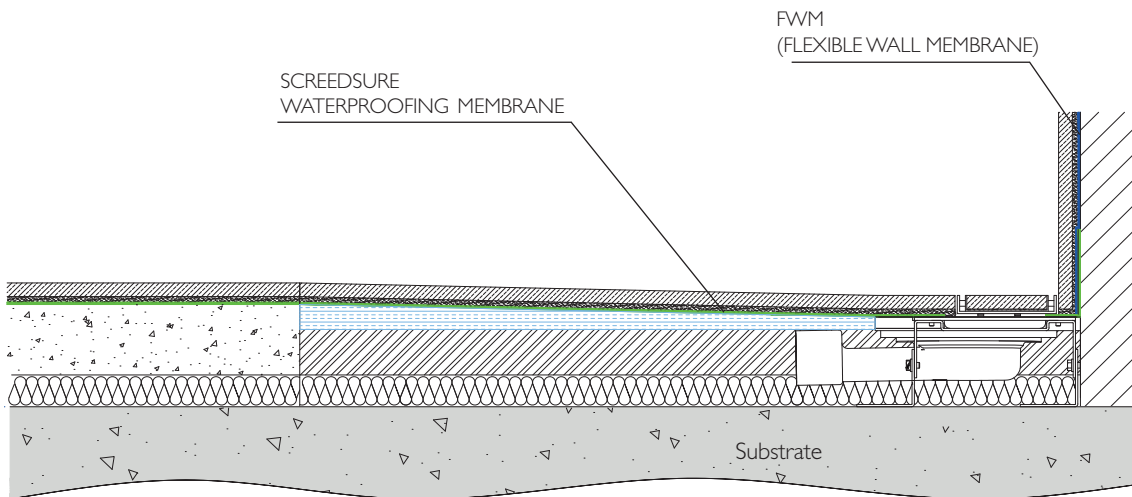
Developed for use in bathrooms, wetrooms and similar wet areas, Screedsure is comprised of a 1mm butyl based membrane, with a fabric top layer providing an excellent

surface for the adhesion of natural stone, porcelain and ceramic tiles.

Screedsure is quick and easy to apply, providing a consistent waterproof layer that is guaranteed not to leak. It also provides an effective barrier to the transition of water vapour.

KEY FEATURES

- Lifetime Guarantee
- Suitable for concrete, including gypsum based anhydrite screeds
- Self-adhesive - quick and easy to apply
- Ready to tile immediately
- Ideal for fast track construction
- Supplied as a complete kit
- 1mm Factory controlled thickness
- Suitable for use with electric and wet underfloor heating †
- Compatible with silicone sealants and stone sealers



† See page 7 for details

PRODUCT INFORMATION

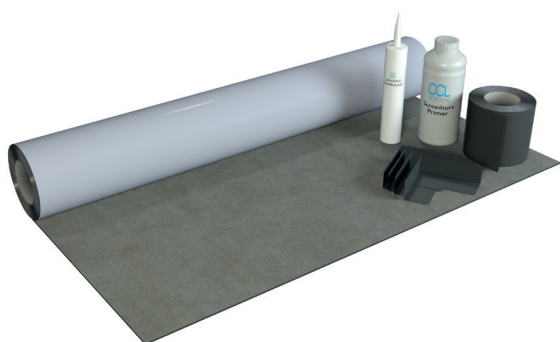
DETAIL

Screedsure is a durable waterproofing membrane comprised of a unique copolymer top layer, with a self-adhesive butyl underside, giving an overall thickness of only 1mm.

Screedsure is quick and easy to apply with a working

temperature range of +5°C to +35°C. It has no drying time and is therefore ready to tile immediately.

Screedsure should only be applied onto screeded and other solid floors. For timber and similar substrates Tilesure should be used.



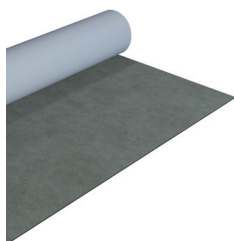
5m² Kit Contents

- 5m x 1m Roll of membrane
- 10m Reinforcing Tape
- 500ml Primer
- 290ml Jointing Compound
- 4 x Pre-formed Internal Corners

10m² Kit Contents

- 10m x 1m Roll of membrane
- 15m Reinforcing Tape
- 1L Primer
- 290ml Jointing Compound
- 4 x Pre-formed Internal Corners

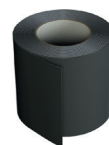
Membrane



A self-adhesive waterproofing membrane with a siliconised release paper.

- Thickness 1mm
- Width 1m
- Length 5m & 10m

Reinforcing Tape



A self-adhesive HDPE butyl Reinforcing Tape, with an easy peel release liner used for reinforcing all wall and floor junctions, butt joints, niches and other detail work within the membrane.

- Thickness 1mm
- Width 125mm
- Length 10m & 15m

Primer



A quick drying acrylic primer for use prior to the application of Screedsure membrane and Reinforcing Tape.

Jointing Compound



An advanced polymer based gun applied compound for use at all wall and floor junctions, butt joints, pipe entries and other such details.

Internal / External Corners



Internal and External Pre-Formed Corners designed to save time and minimise the build-up of membrane in the corners.

PRODUCT INFORMATION

SCREEDSURE PERFORMANCE & COMPOSITION

Membrane Thickness	1mm
Reinforcing Tape Thickness	1mm
Tile Adhesion Bond Strength	202.5N /50mm ²
Water Vapour Transmission	0%
Tensile Strength (EN 12311-2) - Longitudinal - Transversal	3,250N /50mm ² 3,250N /50mm ²
Elongation - Longitudinal - Transversal	≥ 22% ≥ 15%
Joint Strength (EN 12317-2)	21N /50mm
Tear Resistance (EN 12310-1) - Longitudinal - Transversal	90N 65N
Loop Tack	≥ 33N
Peel Adhesion 180°	≥ 55N /50mm

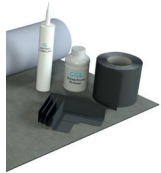

Compatible with electric underfloor heating up to 150W per m²

Compatible with wet underfloor heating systems, provided the pipework does not come into direct contact with the membrane

3.2


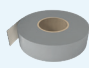

Full technical data sheet available on request from our technical department.

PRODUCT CODES

ITEM	DESCRIPTION	CODE
	5m² Screedsure Kit Kit contains – 5m x 1m roll of membrane, 10m Reinforcing Tape, 500ml Primer, 290ml Jointing Compound	SSM-K5
	10m² Screedsure Kit Kit contains – 10m x 1m roll of membrane, 15m Reinforcing Tape, 1Ltr Primer, 290ml Jointing Compound	SSM-K10

ADDITIONAL ITEMS	DESCRIPTION	CODE	ADDITIONAL ITEMS	DESCRIPTION	CODE
	Additional 10m Reinforcing Tape	SSM-T10		Jointing Compound 290ml	SSM-JC2
	Primer 500ml	SSM-PR5		Pre-formed Internal Corner	PFC-INT
	Primer 1L	SSM-PR10		Pre-formed External Corner	PFC-EXT

Recommended for Waterproofing Walls ^{‡1}

ITEM	DESCRIPTION	CODE
	Flexible Wall Membrane - 8kg tub	FWM-8
	Flexible Wall Membrane Tape - 10m	FWM-TAPE
	Flexible Wall Membrane Primer - 500ml	FWM-PR5

FWM (Flexible Wall Membrane) is a single coat, acrylic paste, designed for waterproofing wall surfaces prior to the application of natural stone, porcelain and ceramic tiles. ^{‡1}

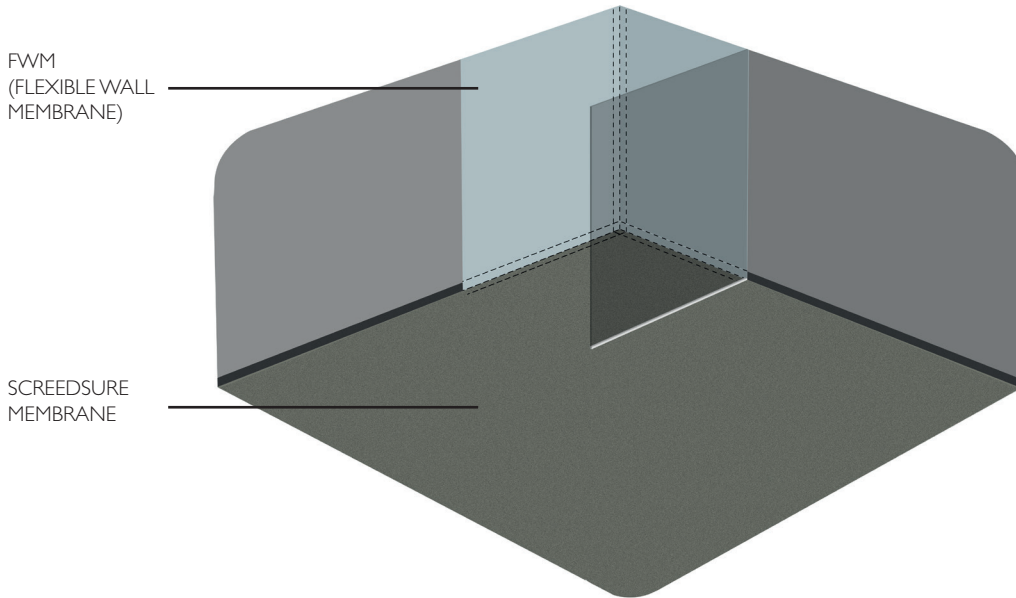
When combined with Screedsure, the system provides a complete waterproofing solution, backed up by our [Lifetime Guarantee](#).

^{‡1} See Product Specification Guide section 3.3 for full details of FWM

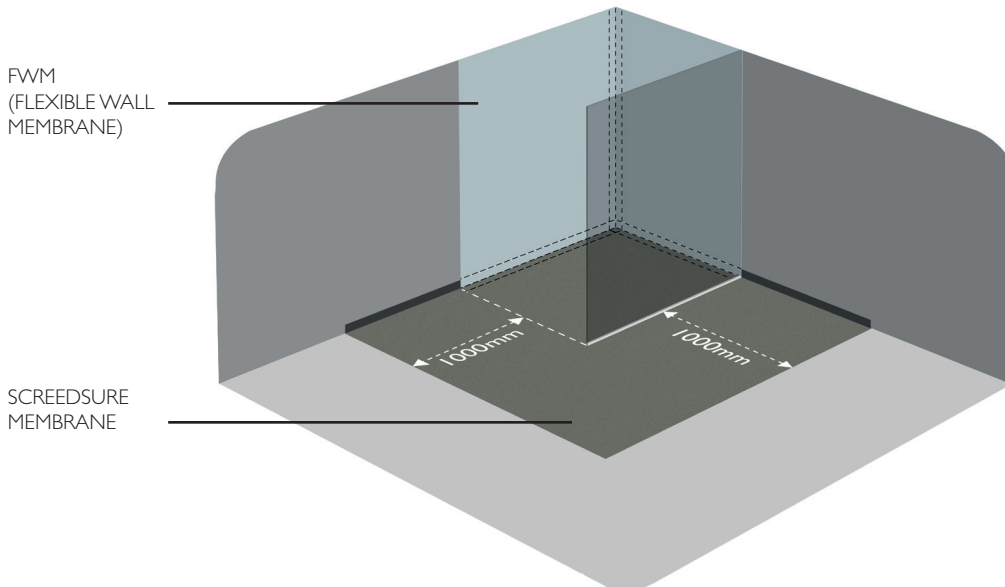
RECOMMENDED APPLICATION

For the majority of installations, it is recommended that Screedsure is applied to the entire bathroom floor area. FWM ^{‡1} should be applied to the walls within the shower area only, to a minimum height of 2200mm and overlapping the Screedsure Reinforcing Tape.

Waterproofing to the entire bathroom floor area (recommended)



Waterproofing to the shower area + 1 metre (minimum requirement)



For larger bathrooms or where cost may be a consideration, Screedsure should be applied to a minimum of the shower area, plus an additional one metre in all directions. FWM ^{‡1} should be applied to the walls within the shower area only, to a minimum height of 2200mm and overlapping the Screedsure Reinforcing Tape.

^{‡1} See Product Specification Guide section 3.3 for full details of FWM

TECHNICAL ENQUIRIES

TEL: 0844 327 6002

technical@ccl-wetrooms.co.uk
www.ccl-wetrooms.co.uk

CCL Specialist Supplies Ltd
Lodge Farm
Hook Road
North Wamborough
Hook
RG29 1HA



TECHNICAL SUPPORT

For technical assistance please contact our experienced technical department who will be happy to assist in the following:

- Project design
- Product specification
- CAD drawings
- Method statements

TECHNICAL SEMINARS

We are able to provide CPD based seminars designed to provide guidance on key wetroom design considerations such as:

- Design and layout
- Drainage
- Waterproofing
- Flow rates

For further information please contact our technical department.

TECHNICAL ADVICE

Our team of technical advisors are able to visit you to provide a professional advisory service and assist with project design and specification.

We are also able to attend site to provide technical support and assistance.

INSTALLATION ENQUIRIES

TEL: 0845 045 6001

enquiries@wetroomsuk.co.uk
www.wetroomsuk.co.uk

Wetrooms UK Ltd
Lodge Farm
Hook Road
North Wamborough
Hook
RG29 1HA

INSTALLATION

With over 30 years experience in the waterproofing industry, our involvement in a project from conception to completion ensures that quality is never compromised.

Our services include:

- Design and installation
- 10 Year Insured Installation guarantee
- On-site training



PEACE OF MIND
GUARANTEED

