

## CASE STUDY

### The Curtain, Shoreditch

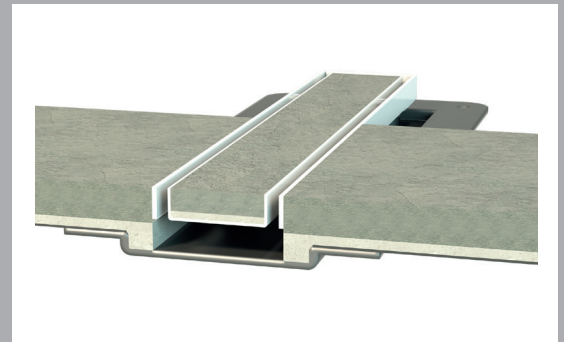
The luxury Five Star Hotel in Shoreditch required wetroom drainage in the guest bedrooms



## THE CHALLENGE

Based in the heart of Shoreditch, The Curtain is a five star hotel offering a roof top pool, luxury spa, 24 hour gym, live music and plenty of restaurants. The hotel rooms & suites offer guests the height of luxury including steam showers, bespoke artwork, London's greatest mini bars and toiletries featuring the hotel's own signature scent.

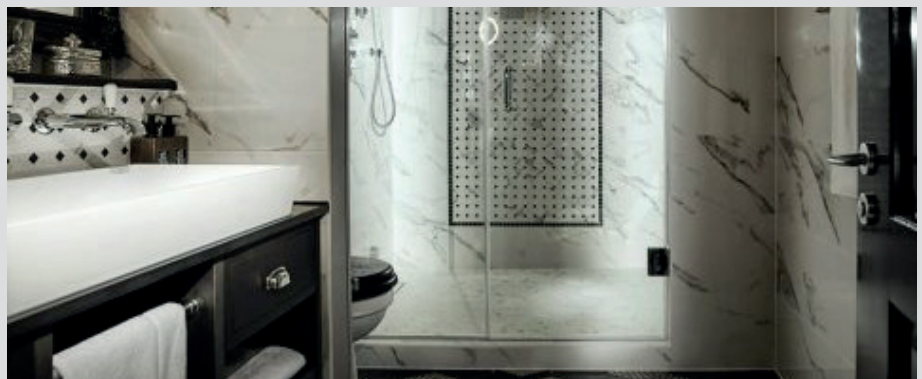
CCL Wetrooms were approached by C.P. Hart Contracts to supply drainage solutions into the marble bathrooms within each of the 120 guest rooms. The wetrooms needed to be suitable for coping with flow rates of up to 24 l/min and were to be constructed on timber floors.



## THE SOLUTION

CCL Wetrooms specified the installation of a Modular Wet-Floor system with a 600mm Stone-infill Floor Grill into each shower area. A stunning Stone-Infill Grill enabling the insertion of natural stone into the grill frame, was the perfect grill finish to complement the marble bathrooms. The drainage grills were each fitted with a 50mm vertical waterseal trap that was able to cope with the required flow rates whilst providing an effective drainage solution within the floor build up.

To waterproof the floors and walls of the wetrooms, CCL Wetrooms recommended the installation of CCL Wetrooms waterproof membrane to the floor and wall junctions within each shower area and across the entire floor area, finishing 75mm up the wall/floor junctions. Flexible Wall Membrane (FWM) was then applied full height to the shower wall, linking to the waterproofing membrane to prevent any water penetration into the adjoining guest rooms.



### CLIENT TESTIMONIAL

“ The luxury bathrooms at The Curtain were designed and fitted with bespoke manufactured Italian basins as well as stunning C.P. Hart brassware fittings and accessories from around the world, perfect for the five star hotel. CCL Wetrooms manufactured & supplied their modular wet-floor systems into the level entry wetrooms, with stone infill grills providing the finishing touch within the shower and steam areas, each complimenting the mix of traditional and contemporary tiling throughout the hotel. ”

**Julia Dawes**, Business Development Manager,  
C.P. Hart Contracts

### PRODUCTS SPECIFIED

- Modular Wet Floor Systems
- 50mm Waterseal Trap
- Bespoke Stone-Infill Grill (S12)
- FWM (Flexible Wall Membrane)
- CCL Wetrooms Waterproofing Membrane



### CCL Wetrooms

0844 327 6002 info@ccl-wetrooms.co.uk www.ccl-wetrooms.co.uk  
Lodge Farm Hook Road North Warnborough Hook Hampshire RG29 1HA

PEACE OF MIND  
GUARANTEED