

FWM

Flexible Wall
Membrane

PRODUCT SPECIFICATION GUIDE

CCL
WETROOMS





SECTION 3 . WATERPROOFING

3.1	TILESURE	WATERPROOFING & DECOUPLING (FLOOR)
3.2	SCREEDSURE	WATERPROOFING (FLOOR)
3.3	FWM	WATERPROOFING (WALL)

INTRODUCTION

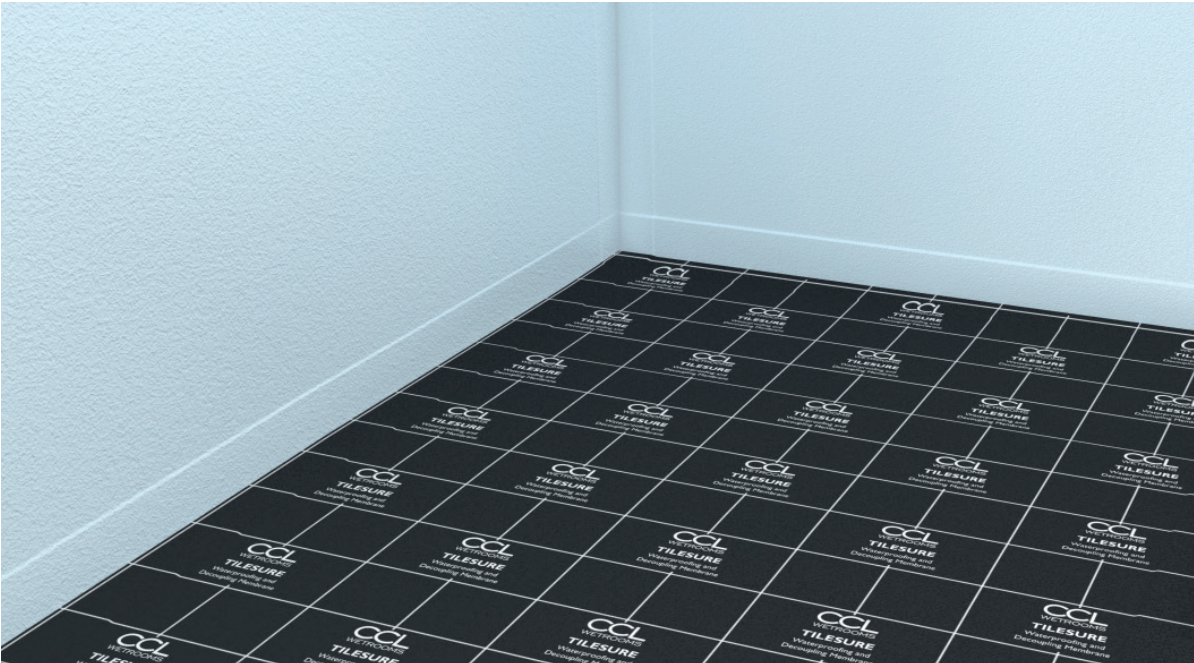
FWM (Flexible Wall Membrane) is a single coat acrylic paste designed for waterproofing wall surfaces, niches, built-in benches and similar critical details within a wetroom prior to the application of natural stone, porcelain and ceramic tiles.

Developed specifically for use in bathrooms, wetrooms and similar wet areas, FWM is quick and easy to apply, providing a consistent waterproof layer, which is guaranteed not to leak.



KEY FEATURES

- Lifetime Guarantee
- Single coat
- Odourless and solvent free
- Quick and easy to apply
- Touch dry in 30 minutes
- Ready to tile in 24 hours
- Suitable for use on all commonly encountered substrates
- 1mm Thickness when applied
- Coverage 1kg per m²
- Reinforcing tape to support junctions
- Compatible with Tilesure & Screedsure



PRODUCT INFORMATION

DETAIL

FWM is a ready to use, pale blue, solvent free paste, with superior elasticity which provides a waterproof barrier between the substrate and wall tiles.

It can be used on all commonly encountered substrates including plasterboard, timber, concrete block, cementitious render, gypsum plaster and tile backer board, with a working temperature range of +5°C to +30°C.

FWM



FWM is a single coat acrylic paste designed for waterproofing wall surfaces prior to the application of natural stone, porcelain and ceramic tiles. 8kg

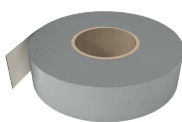
FWM Primer



A quick drying acrylic primer for use prior to the application of FWM and FWM Tape. 500ml

FWM is quick and easy to apply using a brush or short pile roller, to give a continuous thin layer, at least 1mm thick. Coverage – 1kg per m².
Wall and floor junctions, along with other critical areas, should be supported using FWM Reinforcing Tape.
Dusty surfaces and gypsum based plaster should be primed using FWM primer.

FWM Tape



A self-adhesive HDPE butyl Reinforcing Tape with an easy peel release liner, used for reinforcing all wall and floor junctions, butt joints, niches and other detail work within the membrane. 75mm x 10m

FWM PERFORMANCE & COMPOSITION

Typical Coverage	‡1 1kg / m² 8kg tub / 8m²
Drying Time	30 minutes
Before Tiling	24 hours
Direct Contact with Water	7 days
Application Temperature	5°C to 30°C
Service Conditions	-20°C to +50°C

‡1 Assumes thickness of 1mm

Full technical data sheet available on request from our technical department.

All times refer to site conditions of 20°C. These times will be increased at lower temperatures and reduced at higher temperatures. The above performance figures are typical values and should not be considered a product specification.

PRODUCT CODES

ITEM	DESCRIPTION	CODE
	Flexible Wall Membrane - 8kg tub	FWM-8
	Flexible Wall Membrane Tape - 75mm x 10m	FWM-TAPE
	Flexible Wall Membrane Primer - 500ml	FWM-PR5

RECOMMENDED APPLICATION

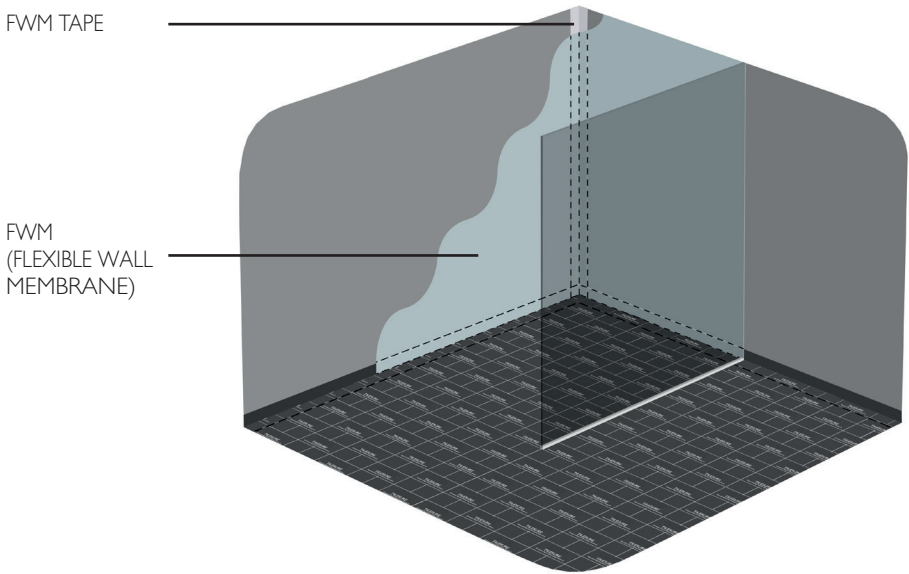
FWM should be applied to a minimum height of 2000mm on all wall surfaces within the shower area, linking onto the floor membrane with a minimum overlap of 60mm.
Vertical wall junctions and other joints should be supported using FWM Reinforcing Tape.

FWM can also be used to waterproof niches, built-in benches and other similar details within the shower area, with joints supported using FWM Reinforcing Tape.

The two components of this system are the floor membrane – Tilesure/Screedsure and the wall membrane - FWM.

When installed together, they provide a complete waterproofing and decoupling solution, backed up by our [Lifetime Guarantee](#).

See Product Specification Guide section 3.1 (Tilesure) and 3.2 (Screedsure) for full details



TECHNICAL ENQUIRIES

TEL: 0844 327 6002

technical@ccl-wetrooms.co.uk
www.ccl-wetrooms.co.uk

CCL Specialist Supplies Ltd
Lodge Farm
Hook Road
North Warnborough
Hook
RG29 1HA



TECHNICAL SUPPORT

For technical assistance please contact our experienced technical department who will be happy to assist in the following:

- Project design
- Product specification
- CAD drawings
- Method statements

TECHNICAL SEMINARS

We are able to provide CPD based seminars designed to provide guidance on key wetroom design considerations such as:

- Design and layout
- Drainage
- Waterproofing
- Flow rates

For further information please contact our technical department.

TECHNICAL ADVICE

Our team of technical advisors are able to visit you to provide a professional advisory service and assist with project design and specification.

We are also able to attend site to provide technical support and assistance.

INSTALLATION ENQUIRIES

TEL: 0845 045 6001

enquiries@wetroomsuk.co.uk
www.wetroomsuk.co.uk

Wetrooms UK Ltd
Lodge Farm
Hook Road
North Warnborough
Hook
RG29 1HA

INSTALLATION

With over 30 years experience in the waterproofing industry, our involvement in a project from conception to completion ensures that quality is never compromised.

Our services include:

- Design and installation
- 10 Year Insured Installation guarantee
- On-site training



PEACE OF MIND
GUARANTEED

